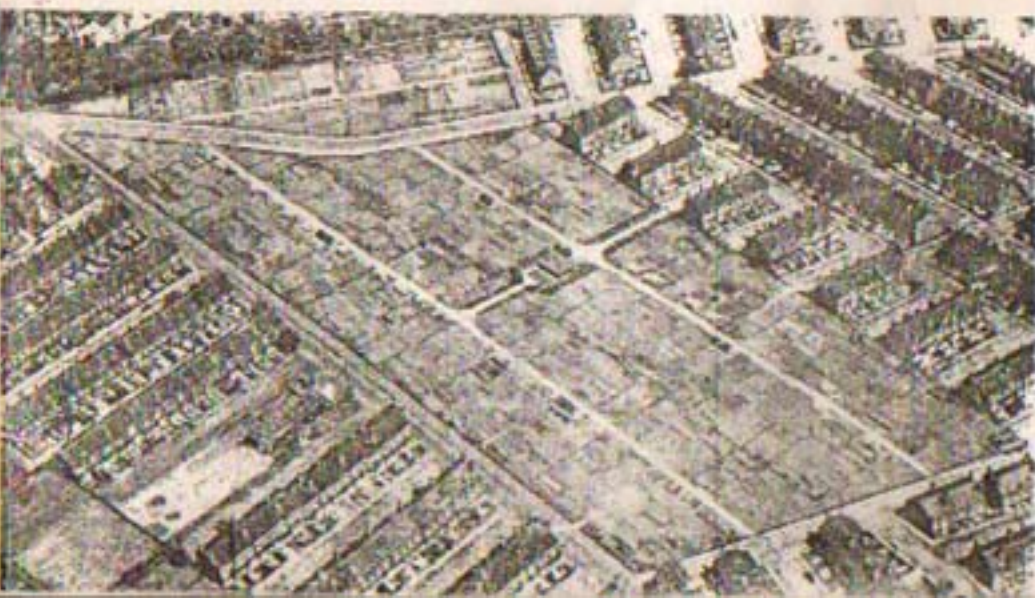




Laid by the Law

CITY OF LEEDS
MODEL ALLOTMENTS

Burley Model Allotments





CITY OF LEEDS
ALLOTMENTS COMMITTEE

The Lord Mayor
(Alderman Mrs. G. A. Stevenson, J.P.)

Councillor Miss Aimee M. Tong (*Chairman*)
Councillor W. V. Stoner, J.P. (*Deputy Chairman*)

Alderman Sir James Croysdale. Alderman Mrs. Mary Pearce, J.P.
Alderman W. Spence.

Councillor S. Bolton.
.. A. R. Bretherick.
.. A. Brown.
.. G. H. S. Dovener.
.. Mrs. E. Haughton.
.. L. W. Jackson.
.. W. Parker.
.. F. Stubbley.

Co-opted Members
(nominated by the Leeds and District Federation of
Allotment Associations)

Mr. T. R. Clayden.
Mr. H. Hill, A.C.I.S.
Mr. G. Jackson.
Mr. R. J. Rudd.
Mr. G. Thompson.
Mr. H. S. Wainwright, O.B.E., F.C.A.

The Allotments Committee record their grateful thanks to the Trustees of Wades Charity, who have made many contributions by the provision of open spaces in the City of Leeds, and who contributed a total of £2,500 towards the establishment of Model Allotments.

CITY OF LEEDS

MODEL ALLOTMENTS

The provision of model allotments in the City was envisaged as far back as 1938, but the outbreak of war in September, 1939, prevented progress until 1946, when the Allotments Committee decided to establish model allotments at Lady Pit Lane.

The success of the Lady Pit Lane allotments, opened in 1948, was such that the Committee decided similar treatment should be given to the oldest allotment gardens in the City known as Burley Pre-war allotments and during 1957 the Burley Model allotments were opened.

Brief notes concerning both places are included in this brochure together with photographs which tell clearly the story of progress at these sites.

L. G. KNIGHT, N.D., Hort. F. Inst. P.A.
Director

Parks, Allotments and Cemeteries Department
Civic Hall, Leeds, 1

Jan. 1960



LADY PIT LANE

This area which comprises $4\frac{1}{2}$ acres had been acquired as an extension to an adjoining playground. As these photographs taken in 1947 show, the land contained hen huts, piggeries, etc., of the worst order, and so that a fresh start could be made, notices to quit expiring 31st December, 1947, were served.

The whole site was then cleared, old buildings, sumps of pig sties, pitched roads, etc., were removed and as the photograph on the following page reveals, cart roads which had been bull-dozed to a depth of one foot were then pitched with rubble from buildings which had been destroyed on the site.

The new layout provides 64 allotments and the persons who had been dispossessed were given the first opportunity of applying for plots on the model scheme. The demand from the old tenants and new applicants was such that many of the plots were let in two halves, and the demand is so great that 23 of the plots are still let in this manner.



The above photograph was taken from the roof of an adjoining factory and shows how the work of construction of cart roads progressed even after the model allotments had been let. At this stage a new fence had not been provided but the photograph below, taken from the same position, shows how the site was subsequently protected by a chain link fence and privet hedge.

The communal buildings and lockers, surrounded by planted areas, are centrally sited in order to avoid damage which may have been sustained had the buildings been placed near the perimeter.





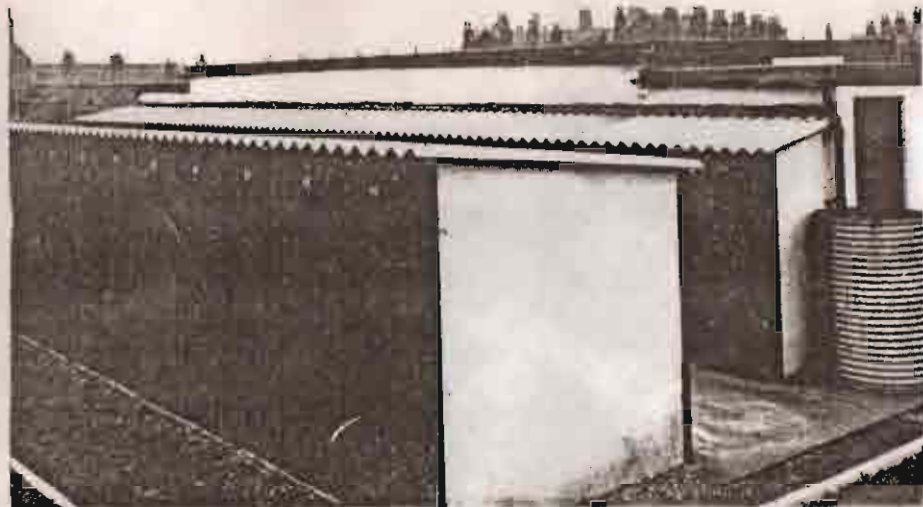
Above is a photograph of the communal building, built mainly in brick and cement painted on the outside. Facilities include a meeting room, wash basins and W.C's for both sexes. To the rear of the building are 64 ploholders' cubicles, each 3' x 2' (shown below).

The communal buildings, including the lockers are let to the Lady Pit Lane Allotment Association at a rental of £8 per annum, payable quarterly in advance. The Association is authorised to let cubicles at 2/6d. per annum and retain the revenue. Thus, 64 cubicles provide the rent which they pay to the Corporation.

The responsibility for the maintenance of the property is divided roughly as follows:-

Outside repairs and painting are the responsibility of the Corporation.
 Inside repairs, painting and all glasswork are the responsibility of the Association.

It is pleasing to record that the closest possible co-operation with the Lady Pit Lane Allotment Association has been maintained since 1948 and an arrangement has operated since 1957 whereby for the payment by the Corporation of £50 per annum the Association undertakes the cleaning of roadways and planted areas.



BURLEY MODEL ALLOTMENTS

Above is a photograph of part of the original "Burley Pre-War" allotments, the site of which was acquired by the Corporation in February, 1892. Several hundred huts and greenhouses of varying size had been erected and endeavours by the Allotments Committee to clean up the site were not successful. Proposals to call upon certain tenants to demolish dilapidated greenhouses, etc., in 1938 and 1939 were abandoned on account of the period of emergency, and in 1955 the Committee took the decision to clear the site entirely and establish model allotments.

The total area exceeds 8 acres; the new scheme provides 119 allotments and the treatment may be said to be similar to that employed at Lady Pit Lane. All rubble used for the cart roads was found on the site. Notices to quit served on tenants of the old allotments expired on the 5th November, 1956 and the first of the model allotments was let on the 27th February, 1957.

It would have been impracticable in this case to group all the ploholders' cubicles in the centre of the site and 5 blocks have therefore been built in vantage points to serve ploholders in the immediate vicinity.

Below is a photograph taken soon after the site was reopened, and shows one block of cubicles and a number of ploholders' greenhouses.





This page is devoted to the communal building at Burley Model Allotments. At the top of the page is a photograph of the front and side elevation and shows the verandah. It will also be noted that the construction is different from that at Lady Pit Lane inasmuch as the outer walls are of polished cedar wood, giving the building a most pleasing appearance. The pavilion provides facilities (meeting room, store room, W.C's and wash basins) similar to those at Lady Pit Lane.

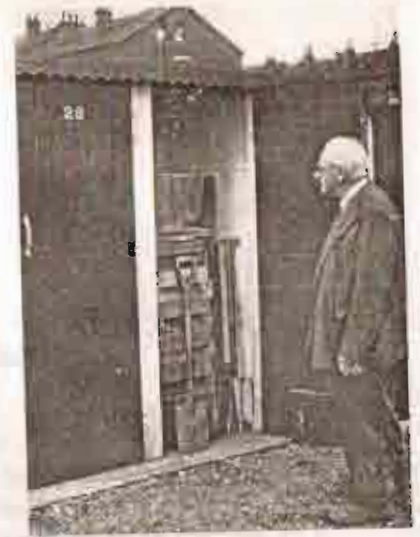
The photograph at the foot of the page shows the rear of the building with a covered and raised loading bay, and it will be observed from the photograph on the next page that this faces the main entrance of the site from an adjoining street.

An agreement in respect of the communal buildings exists between the Burley Model Allotment Association and the Corporation similar in all respects to that at Lady Pit Lane. In the case of Burley, however, there are 100 cubicles which, let by the Association at 2/6 p.a. provide the £12,100, which they pay to the Corporation by way of yearly rent of the buildings.



The question as to how large plot holders' cubicles should be has revealed that there are considerable differences of opinion amongst Local Authorities.

The plot holder shown here is able to find room for his immediate requirements in the 3' x 2' provided. He considers the payment of 2/6d. p.a. for the privilege to be a good investment and the need for unsightly tool boxes on the allotments is thereby dispensed with.



The photograph below of the main entrance to Burley Model Allotments shows the planted areas in the vicinity of the communal building and protection at this site is by 4' unclimbable iron fencing which matches the entrance gates. A privet hedge is also provided.



GENERAL

Although any figures quoted cannot be accepted as a reliable guide to present day costs, it is of interest to state that the Lady Pit Lane and Burley schemes cost slightly in excess of £5,000 and £7,000 respectively.

The buildings and lockers at Lady Pit Lane totalled just over £2,000; those at Burley a little more than £3,000. Both jobs were open to tender and local firms were successful in each case.

The development of the two schemes in districts where there are many houses without adequate gardens has ensured their success. All plots on these necessarily limited areas are fully let and there are waiting lists of applicants. It is generally conceded that the model allotments have enhanced the amenities of the respective districts.